



[Home](#) ▶ [Shop All Products](#) ▶ [Gel Electrophoresis Equipment And Supplies](#) ▶ [Gel Electrophoresis Reagents And Buffers](#) ▶
[Nucleic Acid Molecular Weight Markers](#) ▶ [E-Gel™ 50 Bp DNA Ladder](#)



[Certificates](#) [SDS](#)

Invitrogen™

E-Gel™ 50 bp DNA Ladder

Invitrogen E-Gel 50 bp DNA Ladder is designed for sizing and approximate quantification of double-stranded DNA in the range [Read more](#)

[Technical Support](#) | [Customer Service](#)

Catalog number 10488099



Price (EUR) / 100 applications

-

[Contact Us >](#)



E-Gel 50 bp DNA Ladder is specifically formulated for optimal performance on pre-cast E-Gel agarose gels.

Highlights of E-Gel 50 bp DNA Ladder:

- **Performance**—optimal for use on E-Gel agarose gels
- **Sharp, clear bands**—chromatography purified fragments for consistent and reliable results and stable at room temperature up to six months
- **Ready-to-use**—premixed with loading buffer
- **Convenient**—provided with 1X E-Gel Sample Loading Buffer
- **Precise**—an exact amount of DNA in each band

Product use

The double-stranded DNA ladder can be visualized on 2% E-Gel agarose gels. The ladder is designed with a uniform intensity of DNA bands for a clear view of each band. An exact amount of DNA in each band allows approximate quantification of DNA samples.

For Research Use Only. Not for use in diagnostic procedures.

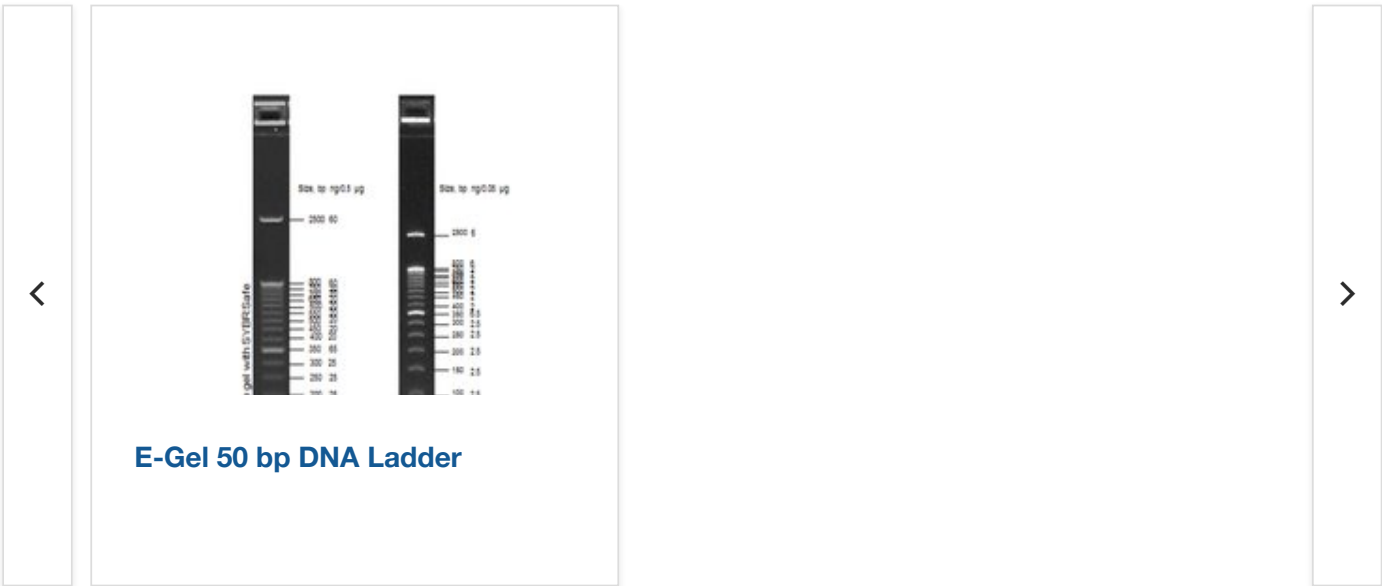
Specifications	
Concentration	0.025 µg/µL
Gel Type	Agarose
Product Type	DNA Ladder
Ready to Load	Yes
Sample Loading Volume	1 mL
Shelf Life	6 Months
Size Range	50 to 2500 bp
Volume (Metric)	2 x 1000 µL
Gel Compatibility	E-Gel™ agarose gels
Green Features	Sustainable packaging
Quantity	100 applications
Shipping Condition	Approved for shipment at Room Temperature or on Dry Ice
System Type	E-Gel™
Technology	Individual chromatography-purified DNA fragments



- 2 x 1 mL E-Gel 50 bp DNA Ladder
- 1 mL 1X E-Gel Sample Loading Buffer




Store at room temperature or at 4°C for up to 6 months.
For longer periods, store at -20°C.

Figures



Documents & Downloads

Certificates

<input type="text" value="Search by lot number or partial lot number"/>				<input type="button" value="Search"/>
Lot #	Certificate Type	Date	Catalog Number(s)	
 3069841	Certificate of Analysis	Sep 24, 2024	10488099	
 3033403	Certificate of Analysis	Aug 06, 2024	10488099	
 3033375	Certificate of Analysis	Aug 06, 2024	10488099	